

# SAUK COUNTY DEVELOPMENT CORPORATION NEWS & VIEWS

## November 2015

---

**Since our last e-newsletter in August, the Sauk County Development Corporation has been busy moving forward on a variety of fronts. Below are the highlights of our recent activities:**

### **2016 Public Sector Support**

This fall has been a time of much positive activity at the Sauk County Development Corporation, including reports and communications to its Sauk County and municipal partners in Baraboo, Lake Delton, Plain, Prairie du Sac, Reedsburg, Sauk City, Spring Green and West Baraboo. SCDC's operating budget has traditionally been funded one-half by Sauk County and one-half by participating partner municipalities on a proportional population basis. This year, due to SCDC being in the midst of organizational transition and transformation, each municipality is being asked to make a 2016 financial commitment of \$1,250, the minimum assessed amount allowed in SCDC's bylaws, and the county is being asked to match that total. The remainder of SCDC's operational expenses would be taken from its reserves until SCDC fully launches its new business model in 2016 -- SCDC's 40<sup>th</sup> anniversary year. Links to some of the newspaper articles about SCDC's 2016 public sector support can be found at [www.scdc.com](http://www.scdc.com).

### **Forward Momentum**

With the Sauk County Development Corporation's 40<sup>th</sup> anniversary scheduled to take place in February 2016, SCDC's Board of Directors has committed to honoring the organization's important legacy while also moving forward this fall with the development of a task force comprised of six private sector representatives and three SCDC Board members:

#### **Sauk County Development Corporation Task Force**

Kari Apel, Apel Associates, Inc., Prairie du Sac  
Nicole Marklein Bacher, Cross, Jenks, Mercer & Maffei, Baraboo  
Jim Bowers, SCDC Board of Directors representing West Baraboo  
Ken Carlson, Sauk Prairie Healthcare, Sauk City/Prairie du Sac  
Derek Cowan, The Baraboo National Bank, Baraboo  
Kyle Kraemer, Kraemer Brothers, Inc. Plain  
Mayor Mike Palm, SCDC Board of Directors representing Baraboo  
Eric Sauey, Seats, Inc., Reedsburg  
Andrew Strathman, SCDC Board of Directors representing Prairie du Sac

The task force has benefited from the counsel of four advisors:

#### **Advising the SCDC Task Force**

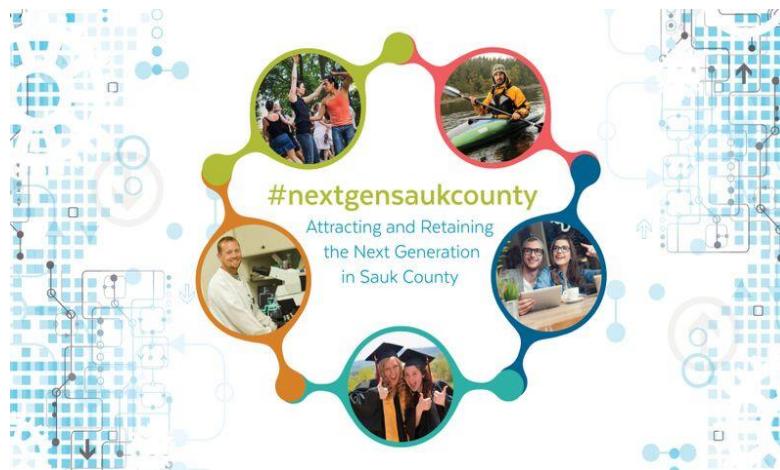
Mark Graupman, Foremost Farms, Baraboo  
Dr. Anthony Kujawa, Retired School Superintendent, Baraboo  
John Shogren, Cardinal IG, Spring Green  
Mark Whitfield, Noah's Ark Waterpark, Lake Delton

# SAUK COUNTY DEVELOPMENT CORPORATION NEWS & VIEWS

## November 2015

---

The Sauk County Development Corporation's Task Force is charged with creating a road map and tactically driven plan for SCDC's future business model. The task force has met twice, including a four-hour session facilitated by Wisconsin Economic Development Association Executive Director Brian Doudna, where the construction of a proposed action plan was begun. The task force's work will conclude in February when the group presents its recommendations to the SCDC Board of Directors. It is an exciting time with great forward momentum for the Sauk County Development Corporation.



### **Big Attendance, Important Topic Discussed at Fall Leadership Forum**

SCDC's 2015 Fall Leadership Forum took place on Thursday evening, November 19 at the Baraboo Arts Banquet & Convention Center. This year's Forum, called #nextgensaukcounty, explored how to attract and retain young adults, ages 25-35, to live and work in Sauk County.

SCDC was pleased to serve as the convener for this important discussion. A record-breaking 219 people registered to attend, with 2/3 representing the private sector and 1/3 the public sector.

This year's Fall Leadership Forum was made possible through the generous support of the following sponsors: Bank of Wisconsin Dells, The Baraboo National Bank, Cell.Plus, Community First Bank, Culver Franchising System, Friede & Associates, J. Stevens Productions, Jewell Associates Engineers, Kraemer Brothers, Madison Area Technical College, MBE CPAs, Next Level Creative and SSM Health/St. Clare Hospital & Dean.

The Forum's featured speakers were Tom Still, President of the Wisconsin Technology Council, and Ian Abston, Co-Founder of NEWaukee, a social architecture firm from Milwaukee. The evening also featured the perspectives of a panel of young professionals from throughout Sauk County.

Afterward, Tom Still wrote his weekly "Inside Wisconsin" newspaper column about the Fall Leadership Forum. Below is a link to the story as it appeared in the November 22, 2015 edition of the *Wisconsin State Journal*. Tom's column appears regularly in over 20 newspapers and news sites.

[http://host.madison.com/wsj/business/tom-still-what-do-millennials-want-it-s-a-question/article\\_af457fd5-d7ba-5cd2-aad7-f92bb7c678c7.html#.VIJEcApw5NE.email](http://host.madison.com/wsj/business/tom-still-what-do-millennials-want-it-s-a-question/article_af457fd5-d7ba-5cd2-aad7-f92bb7c678c7.html#.VIJEcApw5NE.email)

# SAUK COUNTY DEVELOPMENT CORPORATION NEWS & VIEWS

## November 2015

---



In keeping with this time of Thanksgiving, we express our gratitude to those who founded SCDC 40 years ago, to SCDC's Sauk County and municipal partners and to those who have stepped forward to assist SCDC as it transitions and transforms to meet the needs of Sauk County's economic vitality for the next 40 years. Happy Thanksgiving from the Sauk County Development Corporation:

### **Sauk County Development Corporation Board of Directors**

Roger Friede, Jr., President, Reedsburg  
Wendy Crary, Vice President, Spring Green  
Jim Bowers, Secretary, West Baraboo  
Tara Zitzner, Treasurer, Baraboo  
John Alt, Baraboo  
Marty Krueger, Reedsburg (Sauk County representative)  
Mike Palm, Baraboo  
Eric Peterson, Prairie du Sac (Sauk County representative)  
Ray Ring, Plain  
Andrew Strathman, Prairie du Sac  
William F. Wenzel, Prairie du Sac (Sauk County representative)

### **Assisting the Sauk County Development Corporation**

Gina Templin-Steward, Executive Assistant  
Keri Olson, Facilitator

### **Our Mission**

The mission of the Sauk County Development Corporation is to promote and retain the diverse economic vitality of Sauk County and its individual communities.

### **Our Vision**

Sauk County Development Corporation's collaborative, regional approach to economic development ensures that Sauk County continues to be a premier place to live, work and conduct business. Sauk County has a respected, reliable workforce with valuable, diverse skills, as well as a supportive, catalytic environment for entrepreneurs and business expansions.

**If you know of someone who would benefit from receiving SCDC's e-newsletter, please contact Keri Olson, SCDC Facilitator, at (608) 355-4840 or [kolson@co.sauk.wi.us](mailto:kolson@co.sauk.wi.us). Thank you!**